


特性

- 33A触点切换能力
- 适用于太阳能光伏发电用逆变器
- 适用于UPS
- 触点间隙:1.5mm(符合欧洲光伏标准VDE0126)
- 触点与线圈间电气距离大于6.4mm,爬电距离大于8mm
- 整机降低线圈保持电压,节省电力消耗
- 绝缘等级:F级
- 外形尺寸:(30.4 × 15.9 × 23.3)mm

触点参数

触点形式	1A
接触电阻	≤100mΩ(1A 6VDC)
触点材料	银合金
触点负载	阻性:22A/26A 250VAC 感性:31A/33A 250VAC
最大切换额定电压	277VAC
最大切换额定电流	26A/33A
最大切换额定功率	7202VA/9141VA
机械耐久性	100,000次
电耐久性(阻性)	100,000次

性能参数

绝缘电阻		1000MΩ(500VDC)
介质耐压	线圈与触点间	4500VAC 1min
	断开触点间	1000VAC 1min
动作时间(额定电压下)		≤20ms
释放时间(额定电压下)		≤10ms
抗振动	稳定性	10Hz~55Hz 1.5mm
	强度	10Hz~55Hz 1.5mm
抗冲击	稳定性	10G Min
	强度	100G Min
湿度		5%~85%Rh
温度范围		-40℃~105℃
引出端形式		PCB
重量		约22g

线圈规格表

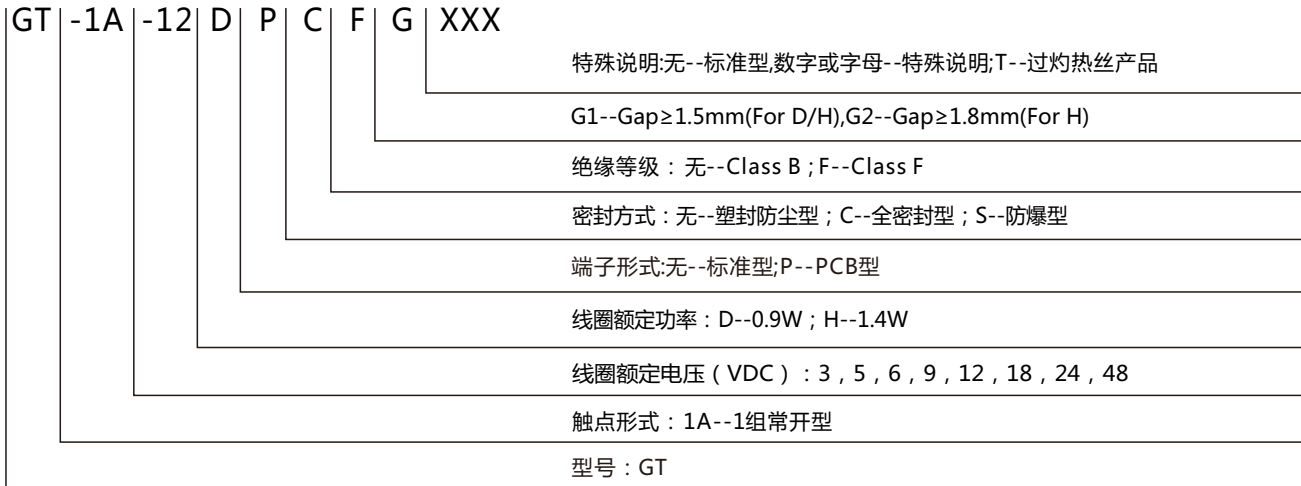
温度：23℃

额定电压 (VDC)	额定电流 ±%(mA)	线圈电阻 ±10%(Ω)	最大连续外加电压	吸合电压 (Max)	释放电压 (Min)	线圈额定功率 (W)
3	300	10	额定电压的130%	额定电压的75%	额定电压的10%	0.9
5	180	27.78				
6	150	40				
9	100	90				
12	75	160				
18	50	360				
24	37.5	640				
48	18.75	2560				
3	466.67	6.43	额定电压的130%	额定电压的75%	额定电压的10%	1.4
5	280	17.86				
6	233.34	25.72				
9	155.56	57.86				
12	116.67	102.86				
18	77.78	231.43				
24	58.34	411.43				
48	29.17	1645.72				

安规认证

认证类别	CQC	TUV	UL
证书号	/	/	/
负载要求	/	/	/

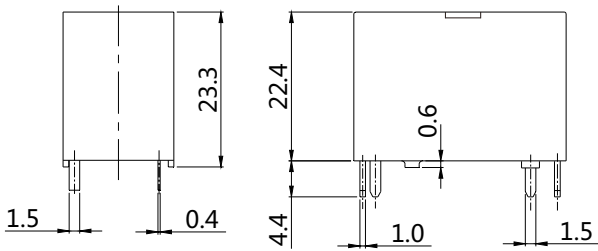
GTP 命名规则



外形图、接线图、安装孔尺寸

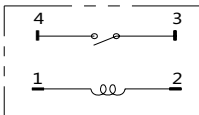
单位:mm

外形图

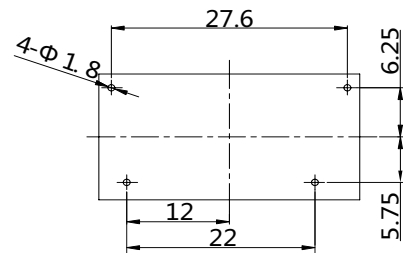


注:产品部分外形尺寸未注尺寸公差,
当外形尺寸 < 1mm,公差为±0.2mm;
当外形尺寸在1~5mm之间时,公差为±0.3mm;
当外形尺寸 > 5mm,公差为±0.4mm。

接线图(底视图)



安装孔尺寸图(底视图)



注:引出端子尺寸为预焊前尺寸;
安装孔尺寸公差:±0.1mm。

声明:

本产品规格书仅供客户使用时参考,若有更改,恕不另行通知。

对高登而言,不可能评定继电器在每个具体应用领域的所有性能参数要求,因而客户应该根据具体的使用条件选择与之相配的产品,若有疑问,请与高登联系获取更多的技术支持,但是产品选型责任由客户负责。

©深圳高登电科股份有限公司版权所有,本公司保留所有权利。

Characteristics


- 33A contact switching capability
- Suitable for inverters for solar photovoltaic power generation
- Suitable for UPS
- Contact gap: 1.5mm (in line with European photovoltaic standard VDE0126)
- Dimensions:(30.4 × 15.9 × 23.3)mm

Contact parameter

Contact form	1A
Contact resistance	≤100mΩ(1A 6VDC)
Contact material	Silver alloy
Contact load	Resistance: 22A/26A 250VAC Inductive: 31A/33A 250VAC
Maximum switching rated voltage	277VAC
Maximum switching current rating	26A/33A
Maximum switching power rating	7202VA/9141VA
Mechanical durability	1,000,000 times
Electrical durability(resistive)	100,000次 times

Performance parameter

Insulation resistance	1000MΩ(500VDC)	
Dielectric withstand voltage	Coil and contact	4500VAC 1min
	Disconnect the contacts	1000VAC 1min
Operating time (at rated voltage)	≤20ms	
Release time (at rated voltage)	≤10ms	
Vibration resistant	Malfunction	10Hz~55Hz 1.5mm
	Durability	10Hz~55Hz 1.5mm
Impact resistance	Malfunction	10G Min
	Durability	100G Min
humidity	5%~85%Rh	
temperature range	-40°C~105°C	
Terminal form	PCB	
weight	About 22g	

Coil parameter			Temperature: 23°C			
Nominal Voltage (VDC)	Rated current ±%(mA)	Coil resistance ±10%(Ω)	Maximum continuous applied voltage	Pull-in voltage (Max)	Release voltage (Min)	Coil rated power (W)
3	300	10	130% of rated voltage	75% of rated voltage	10% of rated voltage	0.9
5	180	27.78				
6	150	40				
9	100	90				
12	75	160				
18	50	360				
24	37.5	640				
48	18.75	2560	130% of rated voltage	75% of rated voltage	10% of rated voltage	1.4
3	466.67	6.43				
5	280	17.86				
6	233.34	25.72				
9	155.56	57.86				
12	116.67	102.86				
18	77.78	231.43				
24	58.34	411.43				
48	29.17	1645.72				

Certification category	CQC	TUV	UL
Certificate No	/	/	/
Load requirement	/	/	/

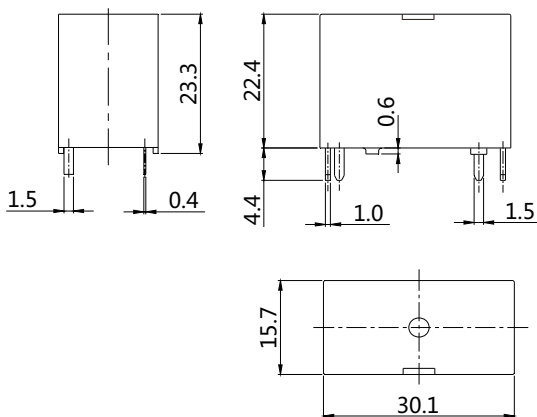
GT-P Naming rules

GT	-1A	-12	D	P	C	F	G	XXX	Special instructions: Blank--standard type; letters or numbers--special instructions
									T--hot wire products
									G1--Gap≥1.5mm(For D/H),G2--Gap≥1.8mm(For H)
									Insulation class: Blank--Class B; F--Class F
									Sealing method: Blank--plastic sealed dustproof type; C--fully sealed type; S--water burst type
									Terminal form: None--standard type; P--PCB type
									Rated coil power : D--0.9W ; H--1.4W
									Rated coil voltage (VDC) : 3 , 5 , 6 , 9 , 12 , 18 , 24 , 48
									Contact Form: 1A--1 pole make contact
									Model: GT

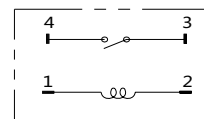
Outline drawing、Wiring diagram (bottom view)

Unit: mm

Outline drawing



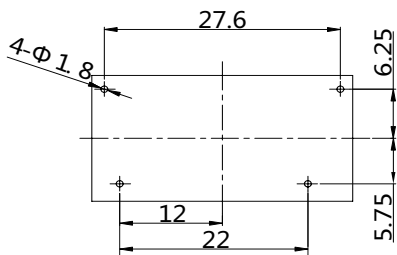
Wiring diagram (bottom view)



Note: Part of the product has no tolerances on the external dimensions.
 When the external dimensions are less than 1mm, the tolerance is $\pm 0.2\text{mm}$;
 When the external dimension is between 1~5mm, the tolerance is $\pm 0.3\text{mm}$;
 When the external dimension > 5mm, the tolerance is $\pm 0.4\text{mm}$.

Mounting hole size (bottom view)

Unit: mm



Note: The size of the lead terminal is the size before pre-welding;
 the size tolerance of the mounting hole: $\pm 0.1\text{mm}$.

statement:

This product specification is only for reference when customers use it, and subject to change without notice.

For Gordon, it is impossible to evaluate all the performance parameter requirements of the relay in each specific application field. Therefore, the customer should choose the product that matches it according to the specific use conditions. If you have questions, please contact Gordon for more technical support, but the customer is responsible for product selection.

©Shenzhen Gordon Electronics Co., Ltd. All rights reserved. All rights are reserved by the company.